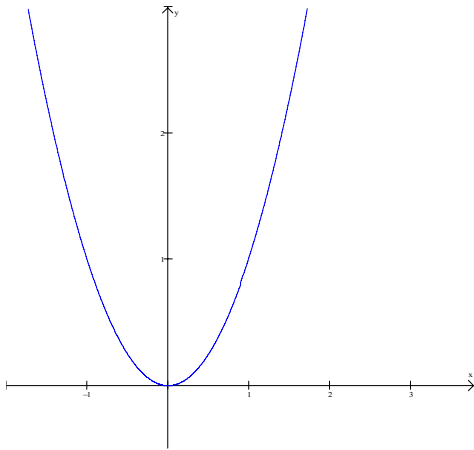
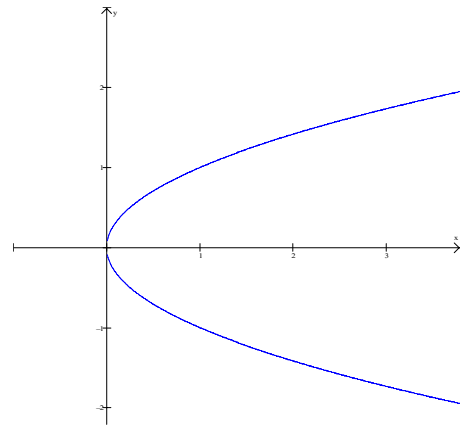


Math 95
Quiz 1 (2.1,2.4)

- 1) Determine whether each of the following is a graph of a function:
Explain your answer.



a)



b)

- 2) Find the function for $f(n) = 5n^2 + 4n$

a) $f(-1)$

b) $f(2a)$

3) Find the slope of line containing the points (6,10) and (4,6)

4) Let $f(x) = (-1/2)x + 3$

a) Determine the slope and y-intercept.

b) Sketch the graph